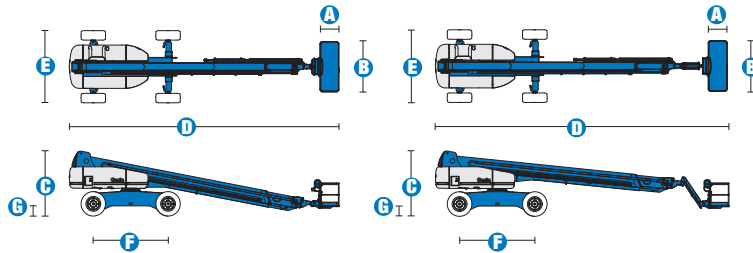


## Specifications



| MODELS                                | S™-120      |         | S™-125      |         |
|---------------------------------------|-------------|---------|-------------|---------|
|                                       | US          | Metric  | US          | Metric  |
| Working height maximum*               | 126 ft      | 38.58 m | 131 ft 2 in | 40.15 m |
| Platform height maximum               | 120 ft      | 36.58 m | 125 ft 2 in | 38.15 m |
| Horizontal reach maximum              | 75 ft       | 22.86 m | 80 ft       | 24.38 m |
| Below ground reach                    | 6 ft 6 in   | 1.98 m  | 10 ft 9 in  | 3.27 m  |
| A Platform length - 8 ft model        | 3 ft        | .91 m   | 3 ft        | .91 m   |
| Platform length - 6 ft model          | 2 ft 6 in   | .76 m   | 2 ft 6 in   | .76 m   |
| B Platform width - 8 ft model         | 8 ft        | 2.44 m  | 8 ft        | 2.44 m  |
| Platform width - 6 ft model           | 6 ft        | 1.83 m  | 6 ft        | 1.83 m  |
| C Height - stowed                     | 10 ft 1 in  | 3.07 m  | 10 ft 1 in  | 3.07 m  |
| D Length - stowed                     | 42 ft 8 in  | 13.00 m | 46 ft 9 in  | 14.25 m |
| Length - transport (jib tucked under) |             |         | 39 ft 11 in | 12.17 m |
| E Width - axles retracted             | 8 ft 2 in   | 2.49 m  | 8 ft 2 in   | 2.49 m  |
| Width - axles extended                | 11 ft       | 3.35 m  | 11 ft       | 3.35 m  |
| F Wheelbase                           | 12 ft       | 3.66 m  | 12 ft       | 3.66 m  |
| G Ground clearance - center           | 1 ft 5.5 in | .44 m   | 1 ft 5.5 in | .44 m   |

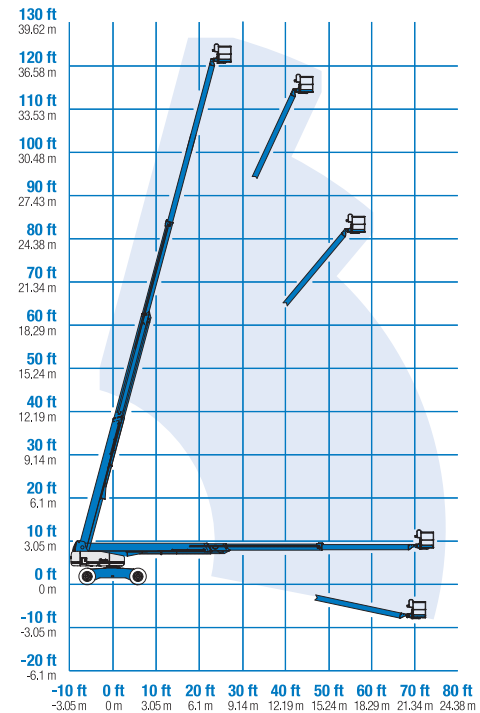
| PRODUCTIVITY                              |                      |          |                      |          |
|---|----------------------|----------|----------------------|----------|
| Lift capacity                             | 750 lbs              | 340 kg   | 500 lbs              | 227 kg   |
| Platform rotation                         | 160°                 |          | 160°                 |          |
| Vertical jib rotation                     | —                    |          | 135°                 |          |
| Turntable rotation                        | 360° continuous      |          | 360° continuous      |          |
| Turntable tailswing - axle retracted      | 5 ft 6 in            | 1.68 m   | 5 ft 6 in            | 1.68 m   |
| Turntable tailswing - axle extended       | 4 ft 1 in            | 1.24 m   | 4 ft 1 in            | 1.24 m   |
| Drive speed - stowed                      | 3.0 mph              | 4.8 km/h | 3.0 mph              | 4.8 km/h |
| Drive speed - raised/extended below 80 ft | 0.68 mph             | 1.1 km/h | 0.68 mph             | 1.1 km/h |
| Drive speed - raised/extended above 80 ft | 0.34 mph             | .55 km/h | 0.34 mph             | .55 km/h |
| Gradeability - stowed**                   | 40%                  |          | 40%                  |          |
| Turning radius - axle retracted: inside   | 13 ft 2 in           | 4.01 m   | 13 ft 2 in           | 4.01 m   |
| Turning radius - axle retracted: outside  | 22 ft 2 in           | 6.75 m   | 22 ft 2 in           | 6.75 m   |
| Turning radius - axle extended: inside    | 8 ft 6 in            | 2.59 m   | 8 ft 6 in            | 2.59 m   |
| Turning radius - axle extended: outside   | 18 ft 10 in          | 5.74 m   | 18 ft 10 in          | 5.74 m   |
| Controls                                  | 12 V DC proportional |          | 12 V DC proportional |          |
| Tires - RT lug                            | 445/65 D22.5         |          | 445/65 D22.5         |          |
| RT solid                                  | 445/65 D24           |          | 445/65 D24           |          |

| POWER                   |   |       |  |       |
|-------------------------|---|-------|--|-------|
| Power source            | Deutz TD 2011 L04i 4-cylinder turbo diesel, 74 hp (55 kW) |       | Perkins 804-33T 4-cylinder turbo diesel, 83 hp (62 kW) |       |
| Auxiliary power unit    | 12 V DC   |       | 12 V DC  |       |
| Hydraulic tank capacity | 55 gal  | 208 L | 55 gal   | 208 L |
| Fuel tank capacity      | 40 gal  | 151 L | 40 gal   | 151 L |

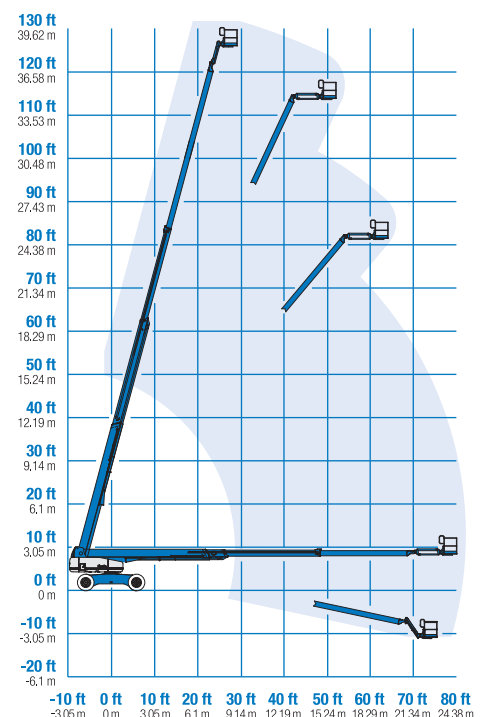
| WEIGHT*** |            |           |            |           |
|-----------|------------|-----------|------------|-----------|
| 4WD       | 44,340 lbs | 20,112 kg | 44,640 lbs | 20,248 kg |

**STANDARDS COMPLIANCE** ANSI A92.5, CSA B354.4, EN 280, AS 1418.10

### RANGE OF MOTION S™-120



### RANGE OF MOTION S™-125



\* The metric equivalent of working height adds 2 m to platform height. U.S. adds 6 ft to platform height.

\*\* Gradeability applies to driving on slopes. See operator's manual for details regarding slope ratings.

\*\*\* Weight will vary depending on options and/or country standards.

## Features

### EASILY CONFIGURED TO MEET YOUR NEEDS

#### PLATFORM OPTIONS

- Steel 8 ft (2.44 m) (standard)
- Steel 6 ft (1.83 m)
- 8 ft (2.44 m) tri-entry

#### JIB OPTIONS

- Non-jib
- 5 ft (1.52 m) jib boom

#### ENGINE OPTIONS

- Deutz turbo diesel 74 hp (55 kW)
- Perkins diesel 83 hp (62 kW)

#### DRIVE/STEER

- 4WD (standard)
- 4WS (standard)

#### AXLE

- Extendable axles (standard)

#### TIRE

- Rough terrain foam-filled (standard)
- Rough terrain solid

### STANDARD FEATURES

#### MEASUREMENTS

##### S™-120

- 126 ft (38.58 m) working height
- 75 ft (22.86 m) horizontal reach
- 750 lb (340 kg) lift capacity

##### S™-125

- 131 ft 2 in (40.15 m) working height
- 80 ft (24.38 m) horizontal reach
- 500 lb (227 kg) lift capacity

#### PRODUCTIVITY

- Self-leveling platform
- Hydraulic platform rotation
- Fully proportional Hall effect joystick controls
- Hydraulic oil cooler
- Drive enable
- AC power cord to platform
- Horn
- Hour meter
- Tilt alarm
- Descent alarm
- Alarm package
- 360° continuous turntable rotation
- Locking turntable covers
- Positive traction drive
- Two speed wheel motors
- Configurable controls to limit maximum height to 80 ft (24.38 m) or 100 ft (30.48 m)
- Ground control box cover
- Engine status display

#### POWER

- 12 V DC auxiliary power
- Anti-restart engine protection
- Auto engine fault shutdown



### OPTIONS & ACCESSORIES

#### PRODUCTIVITY OPTIONS

- Platform swing gate
- Half mesh platform inserts with swing gate
- Platform top auxiliary rail
- Arc Pro 275™ Heavy-Duty Welder package
- Welder Ready package
- Weld leads to platform
- Air line to platform
- Fire resistant hydraulic oil
- Biodegradable hydraulic oil
- Hostile environment package
- Deluxe hostile environment package
- Aircraft protection package (6 ft platform only)
- Thumb rocker steer
- Tool tray
- Pipe cradle (pair)
- Panel cradle package\*
- Platform work lights
- Lockable platform control box covers
- Light package

#### POWER OPTIONS

- AC generator packages (110V/60Hz - 220V/50Hz, 3000W)
- Cold Weather Packages
- Diesel scrubber/spark arrestor muffler (catalytic muffler)
- Intake air pre-cleaner

\* Available on select models

### Genie United States

18340 NE 76th Street  
P.O. Box 97030  
Redmond, Washington 98073-9730

Telephone **+1 (425) 881-1800**  
Toll Free in USA/Canada **+1 (800) 536-1800**  
Fax +1 (425) 883-3475

### Genie Europe

The Maltings  
Wharf Road  
Grantham NG31 6BH  
UK

Telephone **+44 (0)1476 584333**  
Fax +44 (0)1476 584334

Email: [AWP-InfoEurope@terex.com](mailto:AWP-InfoEurope@terex.com)

### Distributed By:

Effective Date: April, 2011. Product specifications and prices are subject to change without notice or obligation. The photographs and/or drawings in this document are for illustrative purposes only. Refer to the appropriate Operator's Manual for instructions on the proper use of this equipment. Failure to follow the appropriate Operator's Manual when using our equipment or to otherwise act irresponsibly may result in serious injury or death. The only warranty applicable to our equipment is the standard written warranty applicable to the particular product and sale and we make no other warranty, express or implied. Products and services listed may be trademarks, service marks or trade-names of Terex Corporation, Genie Industries, Inc. and/or their subsidiaries in the U.S.A. and many other countries and all rights are reserved. Terex is a Registered Trademark of Terex Corporation in the U.S.A. and many other countries. Genie is a Registered Trademark of Genie Industries, Inc. in the U.S.A. and many other countries. Genie is a Terex Brand. © 2011 Terex Corporation.